



Desktop structure

Aluminum profile die-casting structure
Beautiful appearance

Standard configuration



Italy Lartey Belt

High wear resistance and good elasticity
Built-in steel wire is durable



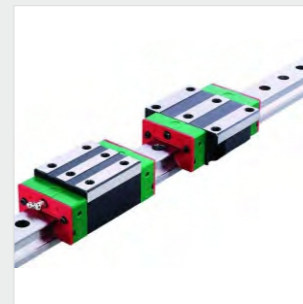
Japan Shinano Motor

High precision
Super speed
High torque and low noise



Taiwan Meanwell Power

Strong anti-interference performance
Good insulation
Long lasting



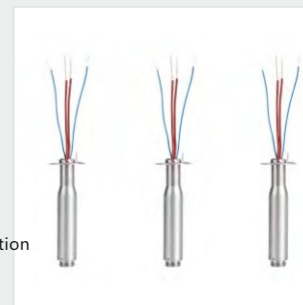
HIWIN Lead Rail

Imported steel casting with high precision, low noise and strong wear resistance



German WELER Thermostat

With high and low temperature alarm function
Strong temperature control stability



German WELER Heater

Silver alloy heat conduction
Original imported with uniform temperature

Soldering upgrade configuration

(Dispenser)

(Screwing)

(Soldering)

(Module)

(Accessories)

(Dispenser)




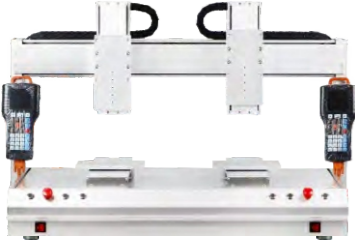
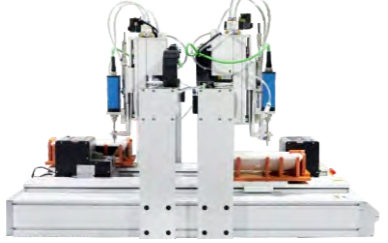

(Screwing)

(Soldering)







(Module)

(Accessories)

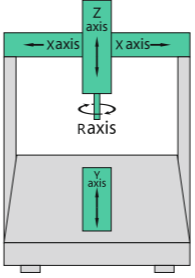
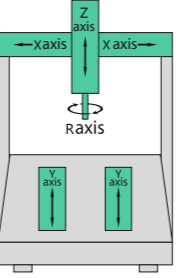
Option 1: Machine structure

| | | |
|---|---|---|
|  |  |  |
| Conventional structure | Cantilever structure | Gantry structure |
|  |  |  |
| Spliced structure | Back-to-back structure | Floor-standing structure |





Option 2: Peripheral configuration

| | | |
|---|---|---|
|  |  |  |
| Protective cover | Simple workbench | Floor workbench |
|  |  |  |
| Safety grating | Warning light | Purification filter |

Option 3: Motion range

| | |
|---|---|
|  |  |
| Single Station model | Dual Station model |
| X axis : 200/300/400/500/600... Y axis : 200/300/400/500/600... Z axis : 100/150/200... R axis : 360° (optional) | X axis : 500/600/700/800/900... Y axis : 300/400/500/600/700... Z axis : 100/150/200... R axis : 360° (optional) |

Option 4: Thermostat / tip

| | |
|---|---|
|  |  |
| Weller temperature control | High frequency temperature control |
|  |  |
| Weller soldering iron tip | High frequency soldering iron tip |

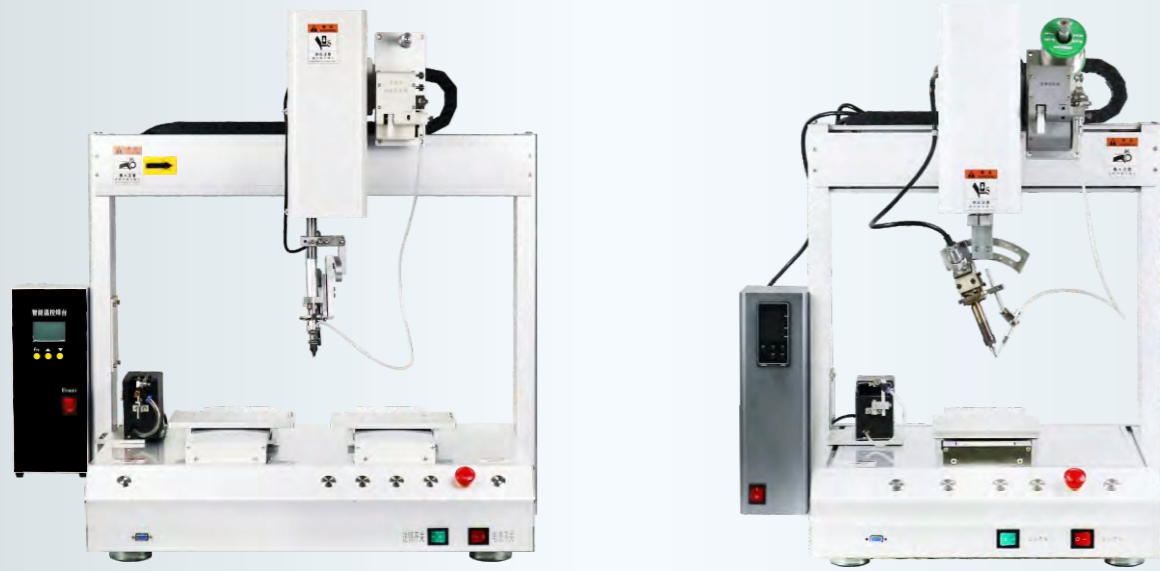
Option 4: Transmission mode

| | | |
|---|---|---|
|  |  |  |
| Synchronous belt | Ball screw | Grinding screw |

Option 5: Motor

| | | |
|---|---|---|
|  |  |  |
| Stepper motor | Closed loop motor | Servo motor |

Automatic soldering robot



*All models are optional: stepper motor / closed loop motor / servo motor + timing belt / ball screw / grinding screw configuration

Environmentally safe, high welding consistency effect

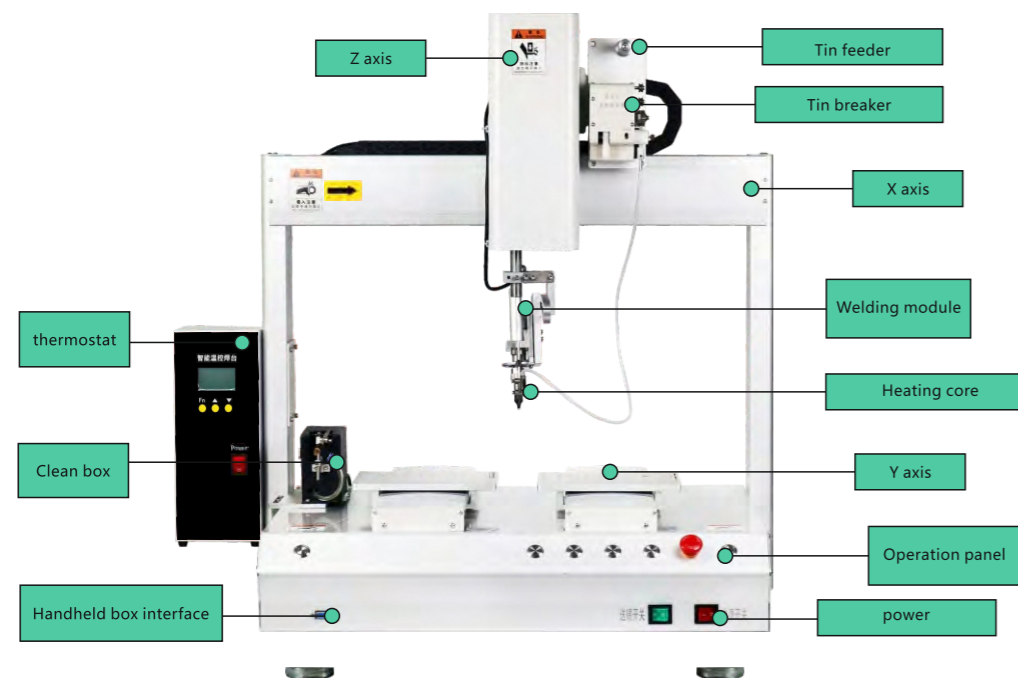
By adjusting the time, power, and temperature, each solder joint can achieve the most ideal soldering effect.

Effectively save labor costs, one person can operate multiple machines.

It can avoid the waste of materials caused by many bad products when using the manual soldering machine.

The welding angle and orientation can be adjusted arbitrarily, and the amount of tin in and out can be accurately controlled to ensure the welding process.

Soldering machine structure Introduction



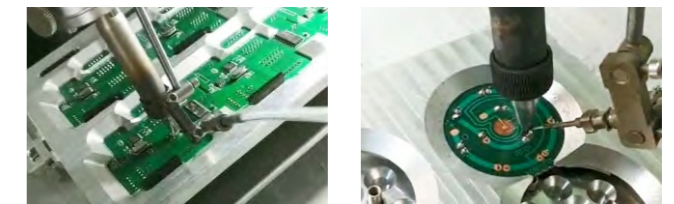
Single-station automatic soldering robot

Germany WELLER imported heating core, the temperature is uniform and stable
Precise temperature controller, fast temperature difference compensation



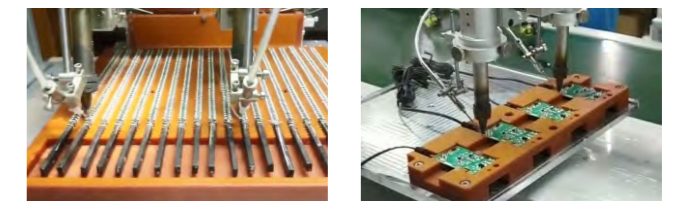
Single-station rotary automatic soldering robot

With rotary solder function, support spot welding drag welding
High-precision tin feeding mechanism, no tin blocking, with tin breaking function



Single-station double-head automatic soldering robot

Double head soldering at the same time, double the efficiency
Program optimization, simple operation, teaching programming



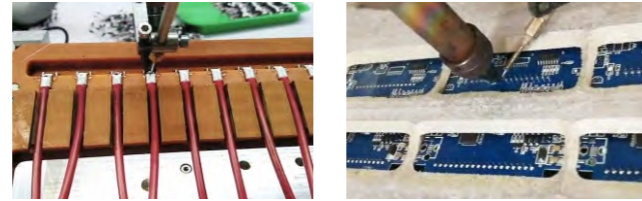
Automatic soldering machine

(Dispenser)



Double-station automatic soldering robot

Alternate soldering around the double station, higher efficiency
German WELER imported heating core, the temperature is uniform and stable



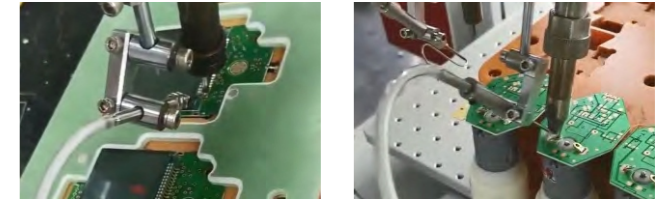
(Screwing)

(Dispenser)



Six-axis double-head rotary automatic soldering robot

High-precision tin feeding mechanism, no tin blocking, with tin breaking function
Multi-axis with rotary solder function, support spot welding drag welding



(Screwing)

(Soldering)



Double-station rotary automatic soldering robot

High-precision tin feeding mechanism, no tin blocking, with tin breaking function
With rotary solder function, support spot welding drag welding

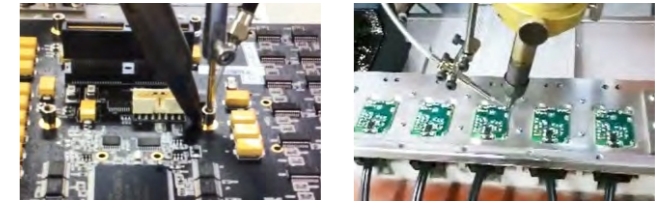


(Soldering)



Five-axis rotary automatic soldering robot

Equipped with smoke purification filter system
Purify and filter the smoke/dust/odor/toxic and harmful gases generated by solder



(Module)

(Module)



Double-head double-station automatic soldering robot

Double-head double-station welding at the same time, double the production efficiency
With a soldering iron tip cleaning system, it can effectively prevent the soldering iron tip from being damaged and remove residual tin quickly



(Accessories)



Multi-head automatic soldering robot

Multi-head soldering at the same time, double the efficiency
Power wire, motor coil, PCB board wire solder

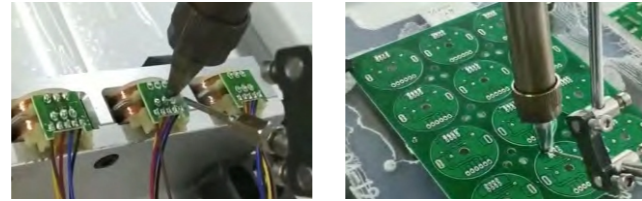


Automatic soldering machine



Automatic soldering robot with protective cover

Germany imported WELLER heating core
Equipped with protective cover, safety grating and alarm light



Specifications

| | | |
|------------------------------|--|-------------------------------|
| Model | Automatic soldering robot | |
| Trip | 300*300*100 / 500*300*300*100mm Customizable itinerary | |
| Temperature control system | WELLER / High frequency | |
| Heating core | WELLER / High frequency | |
| Temperature Range | 500°C | |
| Maximum load | 10KG | |
| Moving speed | 0~500mm/sec | |
| Temperature error | ±2°C | |
| Repeatability accuracy | ±0.02mm/Axis | |
| Program record mode | 100 groups | |
| Display mode | LCD teaching box | |
| Decomposition accuracy | 0.01mm/Axis | |
| Motor system | Japan precision micro stepping motor | |
| Drive mode | Guide | Taiwan silver bar |
| | Belt | Italy Lartey synchronous belt |
| Photoelectricity | Omron | |
| Motion compensation function | 3 axis | |
| Input power | Full voltage AC110~220V | |
| External control interface | RS232 | |

(Dispenser)

(Screwing)

(Soldering)

(Module)

(Accessories)

(Dispenser)

(Screwing)

(Soldering)

(Module)

(Accessories)



Floor-mounted rotary soldering robot

Three-stage tin feeding and heating control
With low temperature and over temperature alarm function



Welded assemblies



WELLER temperature control/
heating core



High Frequency temperature
control/heating core



Single-head solder module



Double-head solder module



Tin breaking machine



WELLER/High Frequency Soldering Tip



Soldering iron tip cleaner



Smoke purification filter system



Automatic soldering foot cutting robot

Automatic soldering, automatic cutting feet
Substitute manual cutting parts foot process requirements, work fast and stable

